



Bespoke concrete design

Price List 2016

Living Concrete Ltd.
12a Sutton Lane North
London W4 4LD

Tel. +44 (0)20 3092 3020

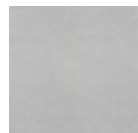


<http://livingconcrete.co.uk>

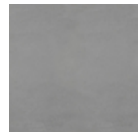
Concrete plates and tiles price list – all prices plus vat and delivery

The following price list is for our standard tiles and plates range. We also design and manufacture bespoke concrete tiles and plates in other formats and colors which are subject to individual pricing. Architectural concrete is a natural and living material, which provides great opportunities not only in terms of shapes and sizes, but also colors and textures. In the production process we use the method of spraying and use a special blend, so our products are lighter than you might think (with a weight comparable to solid wood or even lighter), while maintaining the best possible strength parameters.

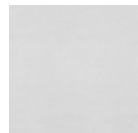
PHOTO	DESCRIPTION	Net £	Thickness [mm]	Color	Unit	Notes	Packing				
							Tile		Pallet		
							Size each [m2]	weight [kg]	No per pallet [qty.]	Tiles per pallet in [m2]	Weight per pallet [kg]

600 x 600mm


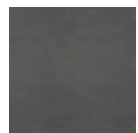
PLAIN SILK MIST 600 x 600 mm	63	7	LIGHT GREY	m ²		0,36	5	40	14,4	200
---------------------------------	----	---	------------	----------------	--	------	---	----	------	-----



PLAIN SILK TYPHOON 600 x 600 mm	63	7	GREY	m ²		0,36	5	40	14,4	200
------------------------------------	----	---	------	----------------	--	------	---	----	------	-----



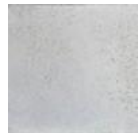
PLAIN SILK FROST 600 x 600 mm	75	7	WHITE	m ²		0,36	5	40	14,4	200
----------------------------------	----	---	-------	----------------	--	------	---	----	------	-----



PLAIN SILK STORM 600 x 600 mm	75	7	ANTHRACITE	m ²		0,36	5	40	14,4	200
----------------------------------	----	---	------------	----------------	--	------	---	----	------	-----

PHOTO	DESCRIPTION	Net £	Thickness [mm]	Color	Unit	Notes	Packing				
							Tile		Pallet		
							Size each [m2]	weight [kg]	No per pallet [qty.]	Tiles per pallet in [m2]	Weight per pallet [kg]

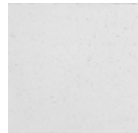
600 x 600 mm



PLAIN SANDBLAST MIST 600 x 600 mm	68	7	LIGHT GREY	m ²		0,36	5	40	14,4	200
--------------------------------------	----	---	------------	----------------	--	------	---	----	------	-----



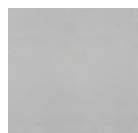
PLAIN SANDBLAST TYPHOON 600 x 600 mm	68	7	GREY	m ²		0,36	5	40	14,4	200
---	----	---	------	----------------	--	------	---	----	------	-----



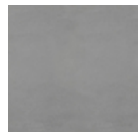
PLAIN SANDBLAST FROST 600 x 600 mm	85	7	WHITE	m ²		0,36	5	40	14,4	200
---------------------------------------	----	---	-------	----------------	--	------	---	----	------	-----



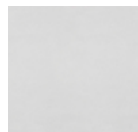
PLAIN SANDBLAST STORM 600 x 600 mm	85	7	ANTHRACITE	m ²		0,36	5	40	14,4	200
---------------------------------------	----	---	------------	----------------	--	------	---	----	------	-----



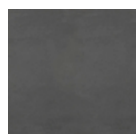
PLAIN SILK MIST 600 x 600 mm	78	15	LIGHT GREY	m ²		0,36	11	40	14,4	440
---------------------------------	----	----	------------	----------------	--	------	----	----	------	-----



PLAIN SILK TYPHOON 600 x 600 mm	78	15	GREY	m ²		0,36	11	40	14,4	440
------------------------------------	----	----	------	----------------	--	------	----	----	------	-----



PLAIN SILK FROST 600 x 600 mm	95	15	WHITE	m ²		0,36	11	40	14,4	440
----------------------------------	----	----	-------	----------------	--	------	----	----	------	-----



PLAIN SILK STORM 600 x 600 mm	95	15	ANTHRACITE	m ²		0,36	11	40	14,4	440
----------------------------------	----	----	------------	----------------	--	------	----	----	------	-----

PHOTO	DESCRIPTION	Net £	Thickness [mm]	Color	Unit	Notes	Packing				
							Tile		Pallet		
							Size each [m2]	weight [kg]	No per pallet [qty.]	Tiles per pallet in [m2]	Weight per pallet [kg]

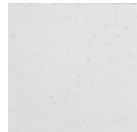
60x60 cm



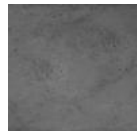
PLAIN ROUGH MIST 600 x 600 mm	78	15	LIGHT GREY	m ²		0,36	12	40	14,4	480
----------------------------------	----	----	------------	----------------	--	------	----	----	------	-----



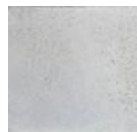
PLAIN ROUGH TYPHOON 600 x 600 mm	78	15	GREY	m ²		0,36	12	40	14,4	480
-------------------------------------	----	----	------	----------------	--	------	----	----	------	-----



PLAIN ROUGH FROST 600 x 600 mm	95	15	WHITE	m ²		0,36	12	40	14,4	480
-----------------------------------	----	----	-------	----------------	--	------	----	----	------	-----



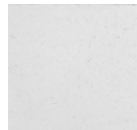
PLAIN ROUGH STORM 600 x 600 mm	95	15	ANTHRACITE	m ²		0,36	12	40	14,4	480
-----------------------------------	----	----	------------	----------------	--	------	----	----	------	-----



PLAIN SANDBLAST MIST 600 x 600 mm	70	15	LIGHT GREY	m ²		0,36	11.5	40	14,4	460
--------------------------------------	----	----	------------	----------------	--	------	------	----	------	-----



PLAIN SANDBLAST TYPHOON 600 x 600 mm	70	15	GREY	m ²		0,36	11.5	40	14,4	460
---	----	----	------	----------------	--	------	------	----	------	-----



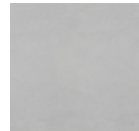
PLAIN SANDBLAST FROST 600 x 600 mm	95	15	WHITE	m ²		0,36	11.5	40	14,4	460
---------------------------------------	----	----	-------	----------------	--	------	------	----	------	-----



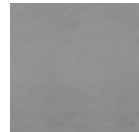
PLAIN SANDBLAST STORM 600 x 600 mm	95	15	ANTHRACITE	m ²		0,36	11.5	40	14,4	460
---------------------------------------	----	----	------------	----------------	--	------	------	----	------	-----

PHOTO	DESCRIPTION	Net £	Thickness [mm]	Color	Unit	Notes	Packing				
							Tile		Pallet		
							Size each [m2]	weight [kg]	No per pallet [qty.]	Tiles per pallet in [m2]	Weight per pallet [kg]

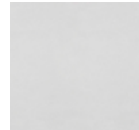
600 x 600 mm



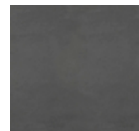
PLAIN SILK MIST 600 x 600 mm x 20mm	80	20	LIGHT GREY	m ²		0,36	14	40	14,4	560
--	----	----	------------	----------------	--	------	----	----	------	-----



PLAIN SILK TYPHOON 600 x 600 mm x 20mm	80	20	GREY	m ²		0,36	14	40	14,4	560
---	----	----	------	----------------	--	------	----	----	------	-----



PLAIN SILK FROST 600 x 600 mm x 20mm	95	20	WHITE	m ²		0,36	14	40	14,4	560
---	----	----	-------	----------------	--	------	----	----	------	-----



PLAIN SILK STORM 600 x 600 mm x 20mm	95	20	ANTHRACITE	m ²		0,36	14	40	14,4	560
---	----	----	------------	----------------	--	------	----	----	------	-----



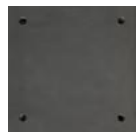
GAP SILK MIST 600 x 600 x 20mm	84	20	LIGHT GREY	m ²		0,36	14	40	14,4	560
-----------------------------------	----	----	------------	----------------	--	------	----	----	------	-----



GAP SILK TYPHOON 600 x 600 x 20mm	84	20	GREY	m ²		0,36	14	40	14,4	560
--------------------------------------	----	----	------	----------------	--	------	----	----	------	-----



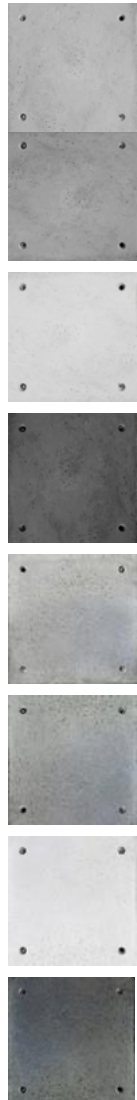
GAP SILK FROST 600 x 600 x 20mm	102	20	WHITE	m ²		0,36	14	40	14,4	560
------------------------------------	-----	----	-------	----------------	--	------	----	----	------	-----



GAP SILK STORM 600 x 600 x 20mm	102	20	ANTHRACITE	m ²		0,36	14	40	14,4	560
------------------------------------	-----	----	------------	----------------	--	------	----	----	------	-----

PHOTO	DESCRIPTION	Net £	Thickness [mm]	Color	Unit	Notes	Packing				
							Tile		Pallet		
							Size each [m2]	weight [kg]	No per pallet [qty.]	Tiles per pallet in [m2]	Weight per pallet [kg]

60x60 cm



GAP ROUGH MIST 600 x 600 x 20mm	83	20	LIGHT GREY	m ²		0,36	15	40	14,4	600
GAP ROUGH TYPHOON 600 x 600 x 20mm	83	20	GREY	m ²		0,36	15	40	14,4	600
GAP ROUGH FROST 600 x 600 x 20mm	102	20	WHITE	m ²		0,36	15	40	14,4	600
GAP ROUGH STORM 600 x 600 x 20mm	102	20	ANTHRACITE	m ²		0,36	15	40	14,4	600
GAP SANDBLAST MIST 600 x 600 x 20mm	87	20	LIGHT GREY	m ²		0,36	14.50	40	14,4	580
GAP SANDBLAST TYPHOON 600 x 600 x 20mm	87	20	GREY	m ²		0,36	14.50	40	14,4	580
GAP SANDBLAST FROST 600 x 600 x 20mm	107	20	FROST	m ²		0,36	14.50	40	14,4	580
GAP SANDBLAST STORM 600 x 600 x 20mm	107	20	ANTHRACITE	m ²		0,36	14.50	40	14,4	580

PHOTO	DESCRIPTION	Net £	Thickness [mm]	Color	Unit	Notes	Packing				
							Tile		Pallet		
							Size each [m2]	weight [kg]	No per pallet [qty.]	Tiles per pallet in [m2]	Weight per pallet [kg]

90x60 cm



PLAIN SILK MIST 600 x 900 x 7mm	85	7	LIGHT GREY	m ²		0,54	7.50	20	10.8	150
------------------------------------	----	---	------------	----------------	--	------	------	----	------	-----



PLAIN SILK TYPHOON 600 x 900 x 7mm	85	7	GREY	m ²		0,54	7.50	20	10.8	150
---------------------------------------	----	---	------	----------------	--	------	------	----	------	-----



PLAIN SILK FROST 600 x 900 x 7mm	102	7	WHITE	m ²		0,54	7.50	20	10.8	150
-------------------------------------	-----	---	-------	----------------	--	------	------	----	------	-----



PLAIN SILK STORM 600 x 900 x 7mm	102	7	ANTHRACITE	m ²		0,54	7.50	20	10.8	150
-------------------------------------	-----	---	------------	----------------	--	------	------	----	------	-----



PLAIN SANDBLAST MIST 600 x 900 x 7mm	90	7	LIGHT GREY	m ²		0,54	7.50	20	10.8	150
---	----	---	------------	----------------	--	------	------	----	------	-----



PLAIN SANDBLAST TYPHOON 600 x 900 x 7mm	90	7	GREY	m ²		0,54	7.50	20	10.8	150
--	----	---	------	----------------	--	------	------	----	------	-----



PLAIN SANDBLAST FROST 600 x 900 x 7mm	105	7	WHITE	m ²		0,54	7.50	20	10.8	150
--	-----	---	-------	----------------	--	------	------	----	------	-----



PLAIN SANDBLAST STORM 600 x 900 x 7mm	105	7	ANTHRACITE	m ²		0,54	7.50	20	10.8	150
--	-----	---	------------	----------------	--	------	------	----	------	-----

PHOTO	DESCRIPTION	Net £	Thickness [mm]	Color	Unit	Notes	Packing				
							Tile		Pallet		
							Size each [m2]	weight [kg]	No per pallet [qty.]	Tiles per pallet in [m2]	Weight per pallet [kg]

90x60 cm



PLAIN SILK MIST 600 x 900 x 15mm	90	15	LIGHT GREY	m ²		0,54	17	20	10.8	340
-------------------------------------	----	----	------------	----------------	--	------	----	----	------	-----



PLAIN SILK TYPHOON 600 x 900 x 15mm	90	15	GREY	m ²		0,54	17	20	10.8	340
--	----	----	------	----------------	--	------	----	----	------	-----



PLAIN SILK FROST 600 x 900 x 15mm	112	15	WHITE	m ²		0,54	17	20	10.8	340
--------------------------------------	-----	----	-------	----------------	--	------	----	----	------	-----



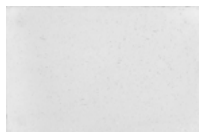
PLAIN SILK STORM 600 x 900 x 15mm	112	15	ANTHRACITE	m ²		0,54	17	20	10.8	340
--------------------------------------	-----	----	------------	----------------	--	------	----	----	------	-----



PLAIN ROUGH MIST 600 x 900 x 15mm	90	15	LIGHT GREY	m ²		0,54	18	20	10.8	360
--------------------------------------	----	----	------------	----------------	--	------	----	----	------	-----



PLAIN ROUGH TYPHOON 600 x 900 x 15mm	90	15	GREY	m ²		0,54	18	20	10.8	360
---	----	----	------	----------------	--	------	----	----	------	-----



PLAIN ROUGH FROST 600 x 900 x 15mm	112	15	WHITE	m ²		0,54	18	20	10.8	360
---------------------------------------	-----	----	-------	----------------	--	------	----	----	------	-----



PLAIN ROUGH STORM 600 x 900 x 15mm	112	15	ANTHRACITE	m ²		0,54	18	20	10.8	360
---------------------------------------	-----	----	------------	----------------	--	------	----	----	------	-----

PHOTO	DESCRIPTION	Net £	Thickness [mm]	Color	Unit	Notes	Packing				
							Tile		Pallet		
							Size each [m2]	weight [kg]	No per pallet [qty.]	Tiles per pallet in [m2]	Weight per pallet [kg]

90x60 cm



PLAIN SANDBLAST MIST 600 x 900 x 15mm	95	15	LIGHT GREY	m ²		0,54	17.5	20	10.8	350
--	----	----	------------	----------------	--	------	------	----	------	-----



PLAIN SANDBLAST TYPHOON 600 x 900 x 15mm	95	15	GREY	m ²		0,54	17.5	20	10.8	350
---	----	----	------	----------------	--	------	------	----	------	-----



PLAIN SANDBLAST FROST 600 x 900 x 15mm	115	15	WHITE	m ²		0,54	17.5	20	10.8	350
---	-----	----	-------	----------------	--	------	------	----	------	-----



PLAIN SANDBLAST STORM 600 x 900 x 15mm	115	15	ANTHRACITE	m ²		0,54	17.5	20	10.8	350
---	-----	----	------------	----------------	--	------	------	----	------	-----



PLAIN SILK MIST 600 x 900 x 20mm	92	20	LIGHT GREY	m ²		0,54	22	20	10.8	440
-------------------------------------	----	----	------------	----------------	--	------	----	----	------	-----



PLAIN SILK TYPHOON 600 x 900 x 20mm	92	20	GREY	m ²		0,54	22	20	10.8	440
--	----	----	------	----------------	--	------	----	----	------	-----



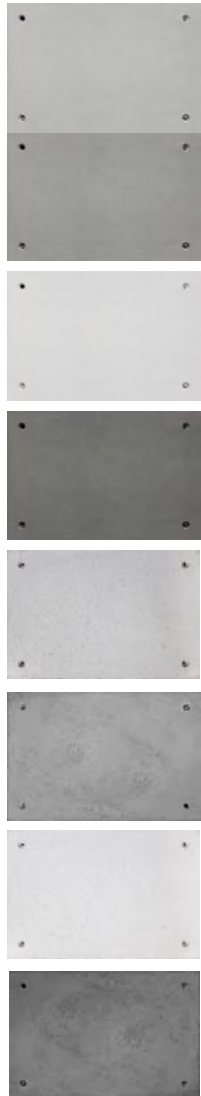
PLAIN SILK FROST 600 x 900 x 20mm	115	20	WHITE	m ²		0,54	22	20	10.8	440
--------------------------------------	-----	----	-------	----------------	--	------	----	----	------	-----



PLAIN SILK STORM 600 x 900 x 20mm	115	20	ANTHRACITE	m ²		0,54	22	20	10.8	440
--------------------------------------	-----	----	------------	----------------	--	------	----	----	------	-----

PHOTO	DESCRIPTION	Net £	Thickness [mm]	Color	Unit	Notes	Packing				
							Tile		Pallet		
							Size each [m2]	weight [kg]	No per pallet [qty.]	Tiles per pallet in [m2]	Weight per pallet [kg]

90x60 cm



GAP SILK MIST 600 x 900 x 20mm	95	20	LIGHT GREY	m ²		0,54	22	20	10.8	440
GAP SILK TYPHOON 600 x 900 x 20mm	95	20	GREY	m ²		0,54	22	20	10.8	440
GAP SILK FROST 600 x 900 x 20mm	115	20	WHITE	m ²		0,54	22	20	10.8	440
GAP SILK STORM 600 x 900 x 20mm	115	20	ANTHRACITE	m ²		0,54	22	20	10.8	440
GAP ROUGH MIST 600 x 900 x 20mm	95	20	LIGHT GREY	m ²		0,54	23	20	10.8	460
GAP ROUGH TYPHOON 600 x 900 x 20mm	95	20	GREY	m ²		0,54	23	20	10.8	460
GAP ROUGH FROST 600 x 900 x 20mm	115	20	WHITE	m ²		0,54	23	20	10.8	460
GAP ROUGH STORM 600 x 900 x 20mm	115	20	ANTHRACITE	m ²		0,54	23	20	10.8	460

PHOTO	DESCRIPTION	Net £	Thickness [mm]	Color	Unit	Notes	Packing				
							Tile		Pallet		
							Size each [m2]	weight [kg]	No per pallet [qty.]	Tiles per pallet in [m2]	Weight per pallet [kg]

90x60 cm



GAP SANDBLAST MIST 600 x 900 x 20mm	98	20	LIGHT GREY	m ²		0,54	22.5	20	10.8	450
--	----	----	------------	----------------	--	------	------	----	------	-----



GAP SANDBLAST TYPHOON 600 x 900 x 20mm	98	20	GREY	m ²		0,54	22.5	20	10.8	450
---	----	----	------	----------------	--	------	------	----	------	-----



GAP SANDBLAST FROST 600 x 900 x 20mm	123	20	WHITE	m ²		0,54	22.5	20	10.8	450
---	-----	----	-------	----------------	--	------	------	----	------	-----



GAP SANDBLAST STORM 600 x 900 x 20mm	123	20	ANTHRACITE	m ²		0,54	22.5	20	10.8	450
---	-----	----	------------	----------------	--	------	------	----	------	-----

PHOTO	DESCRIPTION	Net £	Thickness [mm]	Color	Unit	Notes	Packing				
							Tile		Pallet		
							Size each [m2]	weight [kg]	No per pallet [qty.]	Tiles per pallet in [m2]	Weight per pallet [kg]

120x60 cm

	PLAIN SILK MIST 1200 x 600 x 7mm	85	7	LIGHT GREY	m ²		0,72	10,5	20	14,4	210
	PLAIN SILK TYPHOON 1200 x 600 x 7mm	85	7	GREY	m ²		0,72	10,5	20	14,4	210
	PLAIN SILK FROST 1200 x 600 x 7mm	95	7	WHITE	m ²		0,72	10,5	20	14,4	210
	PLAIN SILK STORM 1200 x 600 x 7mm	95	7	ANTHRACITE	m ²		0,72	10,5	20	14,4	210
	PLAIN SANDBLAST MIST 1200 x 600 x 7mm	85	7	LIGHT GREY	m ²		0,72	10,5	20	14,4	210
	PLAIN SANDBLAST TYPHOON 1200 x 600 x 7mm	85	7	GREY	m ²		0,72	10,5	20	14,4	210
	PLAIN SANDBLAST FROST 1200 x 600 x 7mm	95	7	WHITE	m ²		0,72	10,5	20	14,4	210
	PLAIN SANDBLAST STORM 1200 x 600 x 7mm	95	7	ANTHRACITE	m ²		0,72	10,5	20	14,4	210

PHOTO	DESCRIPTION	Net £	Thickness [mm]	Color	Unit	Notes	Packing				
							Tile		Pallet		
							Size each [m2]	weight [kg]	No per pallet [qty.]	Tiles per pallet in [m2]	Weight per pallet [kg]

120x60 cm

	PLAIN SILK MIST 1200 x 600 x 15mm	90	15	LIGHT GREY	m ²		0,72	23	20	4.4	460
	PLAIN SILK TYPHOON 1200 x 600 x 15mm	90	15	GREY	m ²		0,72	23	20	4.4	460
	PLAIN SILK FROST 1200 x 600 x 15mm	112	15	WHITE	m ²		0,72	23	20	4.4	460
	PLAIN SILK STORM 1200 x 600 x 15mm	112	15	ANTHRACITE	m ²		0,72	23	20	4.4	460
	PLAIN ROUGH MIST 1200 x 600 x 15mm	90	15	LIGHT GREY	m ²		0,72	24	20	4.4	480
	PLAIN ROUGH TYPHOON 1200 x 600 x 15mm	90	15	GREY	m ²		0,72	24	20	4.4	480
	PLAIN ROUGH FROST 1200 x 600 x 15mm	112	15	WHITE	m ²		0,72	24	20	4.4	480
	PLAIN ROUG STORM 1200 x 600 x 15mm	112	15	ANTHRACITE	m ²		0,72	24	20	4.4	480

PHOTO	DESCRIPTION	Net £	Thickness [mm]	Color	Unit	Notes	Packing				
							Tile		Pallet		
							Size each [m2]	weight [kg]	No per pallet [qty.]	Tiles per pallet in [m2]	Weight per pallet [kg]

120x60 cm

	PLAIN SANDBLAST MIST 1200 x 600 x 15mm	95	15	LIGHT GREY	m ²		0,72	23.5	20	4.4	480
	PLAIN SANDBLAST TYPHOON 1200 x 600 x 15mm	95	15	GREY	m ²		0,72	23.5	20	4.4	480
	PLAIN SANDBLAST FROST 1200 x 600 x 15mm	115	15	WHITE	m ²		0,72	23.5	20	4.4	480
	PLAIN SANDBLAST STORM 1200 x 600 x 15mm	115	15	ANTHRACITE	m ²		0,72	23.5	20	4.4	480
	PLAIN SILK MIST 1200 x 600 x 20mm	90	20	LIGHT GREY	m ²		0,72	25.0	20	14.4	500
	PLAIN SILK TYPHOON 1200 x 600 x 20mm	90	20	GREY	m ²		0,72	25.0	20	14.4	500
	PLAIN SILK FROST 1200 x 600 x 20mm	115	20	WHITE	m ²		0,72	25.0	20	14.4	500
	PLAIN SILK STORM 1200 x 600 x 20mm	115	20	ANTHRACITE	m ²		0,72	25.0	20	14.4	500

PHOTO	DESCRIPTION	Net £	Thickness [mm]	Color	Unit	Notes	Packing				
							Tile		Pallet		
							Size each [m2]	weight [kg]	No per pallet [qty.]	Tiles per pallet in [m2]	Weight per pallet [kg]

120x60 cm

	GAP SILK MIST 1200 x 600 x 20mm	95	20	LIGHT GREY	m ²		0,72	25.0	20	14.4	500
	GAP SILK TYPHOON 1200 x 600 x 20mm	95	20	GREY	m ²		0,72	25.0	20	14.4	500
	GAP SILK FROST 1200 x 600 x 20mm	115	20	WHITE	m ²		0,72	25.0	20	14.4	500
	GAP SILK STORM 1200 x 600 x 20mm	115	20	ANTRACHITE	m ²		0,72	25.0	20	14.4	500
	GAP ROUGH MIST 1200 x 600 x 20mm	95	20	LIGHT GREY	m ²		0,72	26	20	14.4	520
	GAP ROUGH TYPHOON 1200 x 600 x 20mm	95	20	GREY	m ²		0,72	26	20	14.4	520
	GAP ROUGH FROST 1200 x 600 x 20mm	115	20	WHITE	m ²		0,72	26	20	14.4	520
	GAP ROUGH STORM 1200 x 600 x 20mm	115	20	ANTHRACITE	m ²		0,72	26	20	14.4	520

PHOTO	DESCRIPTION	Net £	Thickness [mm]	Color	Unit	Notes	Packing				
							Tile		Pallet		
							Size each [m2]	weight [kg]	No per pallet [qty.]	Tiles per pallet in [m2]	Weight per pallet [kg]

120x60 cm



GAP SANDBLAST MIST 1200 x 600 x 20mm	115	20	LIGHT GREY	m ²		0,72	25.5	20	14.4	510
---	-----	----	------------	----------------	--	------	------	----	------	-----



GAP SANDBLAST TYPHOON 1200 x 600 x 20mm	115	20	GREY	m ²		0,72	25.5	20	14.4	510
--	-----	----	------	----------------	--	------	------	----	------	-----



GAP SANDBLAST FROST 1200 x 600 x 20mm	120	20	WHITE	m ²		0,72	25.5	20	14.4	510
--	-----	----	-------	----------------	--	------	------	----	------	-----



GAP SANDBLAST STORM 1200 x 600 x 20mm	120	20	ANTHRACITE	m ²		0,72	25.5	20	14.4	510
--	-----	----	------------	----------------	--	------	------	----	------	-----

PHOTO	DESCRIPTION	Net £	Thickness [mm]	Color	Unit	Notes	Packing				
							Tile		Pallet		
							Size each [m2]	weight [kg]	No per pallet [qty.]	Tiles per pallet in [m2]	Weight per pallet [kg]



PAPER CRUSH – MIST decorative panel 600 x 600 x 40mm	70	40	LIGHT GREY	Each		0.36	14			
---	----	----	------------	------	--	------	----	--	--	--



ROLY-POLY – MIST decorative panel 600 x 600 x 88mm	70	88	LIGHT GREY	Each		0.36	27			
---	----	----	------------	------	--	------	----	--	--	--



CORNER RIGHT-LEFT MIST 1200 x 600 mm	77		LIGHT GREY	Each		0.72	24			
---	----	--	------------	------	--	------	----	--	--	--



CORNER RIGHT MIST 1200 x 600 mm	70		LIGHT GREY	Each		0.72	24			
------------------------------------	----	--	------------	------	--	------	----	--	--	--



CORNER LEFT MIST 1200 x 600 mm	70		LIGHT GREY	Each		0.72	24			
-----------------------------------	----	--	------------	------	--	------	----	--	--	--



CORNER RIGHT - LEFT MIST 900 x 600 mm	70		LIGHT GREY	Each		0.54	18			
--	----	--	------------	------	--	------	----	--	--	--



CORNER RIGHT MIST 900 x 600 mm	65		LIGHT GREY	Each		0.54	18			
-----------------------------------	----	--	------------	------	--	------	----	--	--	--



CORNER LEFT MIST 900 x 600 mm	65		LIGHT GREY	Each		0.54	18			
----------------------------------	----	--	------------	------	--	------	----	--	--	--

PHOTO	DESCRIPTION	Net £	Thickness [mm]	Color	Unit	Notes	Packing				
							Tile		Pallet		
							Size each [m2]	weight [kg]	No per pallet [qty.]	Tiles per pallet in [m2]	Weight per pallet [kg]



CORNER RIGHT - LEFT MIST 600 x 600 mm	59		LIGHT GREY	Each		0.36	13			
--	----	--	------------	------	--	------	----	--	--	--



CORNER RIGHT MIST 600 x 600 mm	53		LIGHT GREY	Each		0.36	13			
-----------------------------------	----	--	------------	------	--	------	----	--	--	--



CORNER LEFT MIST 600 x 600 mm	53		LIGHT GREY	Each		0.36	13			
----------------------------------	----	--	------------	------	--	------	----	--	--	--



CORNER DOUBLE MIST 600 x 600 mm	59		LIGHT GREY	Each		0.36	13			
------------------------------------	----	--	------------	------	--	------	----	--	--	--



SET DECORATION 3D 15x13cm	95	35	LIGHT GREY	m2		0.0146	0.50			
------------------------------	----	----	------------	----	--	--------	------	--	--	--

PHOTO	DESCRIPTION	Net £	Thickness [mm]	Color	Unit	Notes	Packing				
							Tile		Pallet		
							Size each [m2]	weight [kg]	No per pallet [qty.]	Tiles per pallet in [m2]	Weight per pallet [kg]



DECORATION 3D 50's NO1 SMALL CIRCLES 500 x 500	49	20	LIGHT GREY	Each		0.25	6.6			
---	----	----	------------	------	--	------	-----	--	--	--



DECORATION 3D 50's NO2 LARGE CIRCLES 500 x 500	49	30	LIGHT GREY	Each		0.25	11.3			
---	----	----	------------	------	--	------	------	--	--	--



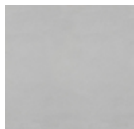
DECORATION 3D 50's NO3 ELLIPSES 500x500 mm	49	16	LIGHT GREY	Each		0.25	7.8			
---	----	----	------------	------	--	------	-----	--	--	--



DECORATION 3D 50's NO4 WINDOWS 500x 500 mm	49	16	LIGHT GREY	Each		0.25	6.3			
---	----	----	------------	------	--	------	-----	--	--	--

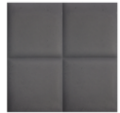


DECORATION 3D 50's NO5 WAVES 500x 500 mm	49	34	LIGHT GREY	Each		0.25	6.3			
---	----	----	------------	------	--	------	-----	--	--	--



DECORATION 3D 50's PLAIN 500x 500 mm	65	20	LIGHT GREY	m2		0.25	4			
---	----	----	------------	----	--	------	---	--	--	--

PHOTO	DESCRIPTION	Net £	Thickness [mm]	Color	Unit	Notes	Packing				
							Tile		Pallet		
							Size each [m2]	weight [kg]	No per pallet [qty.]	Tiles per pallet in [m2]	Weight per pallet [kg]



3D Tiles PILLOW 400 x 400 x 20mm	110	20	WHITE, GREY, BLACK, ANTHRACITE	m2		0.16	4.00			
-------------------------------------	-----	----	--------------------------------------	----	--	------	------	--	--	--



3D Tiles PYRAMID 200 x 200 x 200x 35mm	85	35	HITE, GREY, BLACK, ANTHRACITE	m2		0.04	0.5			
---	----	----	-------------------------------------	----	--	------	-----	--	--	--



3D Tiles PUZZLE 300 x 300x 20mm	120	20	HITE, GREY, BLACK, ANTHRACITE	m2		0.09	2.00			
------------------------------------	-----	----	-------------------------------------	----	--	------	------	--	--	--

There may be discolorations, color variances, cracks and dimensional differences which result from the nature of concrete. The size and distribution of pits on items surfaces is unique and random. Discoloration resulting from air humidity changes is a natural feature of the concrete items.